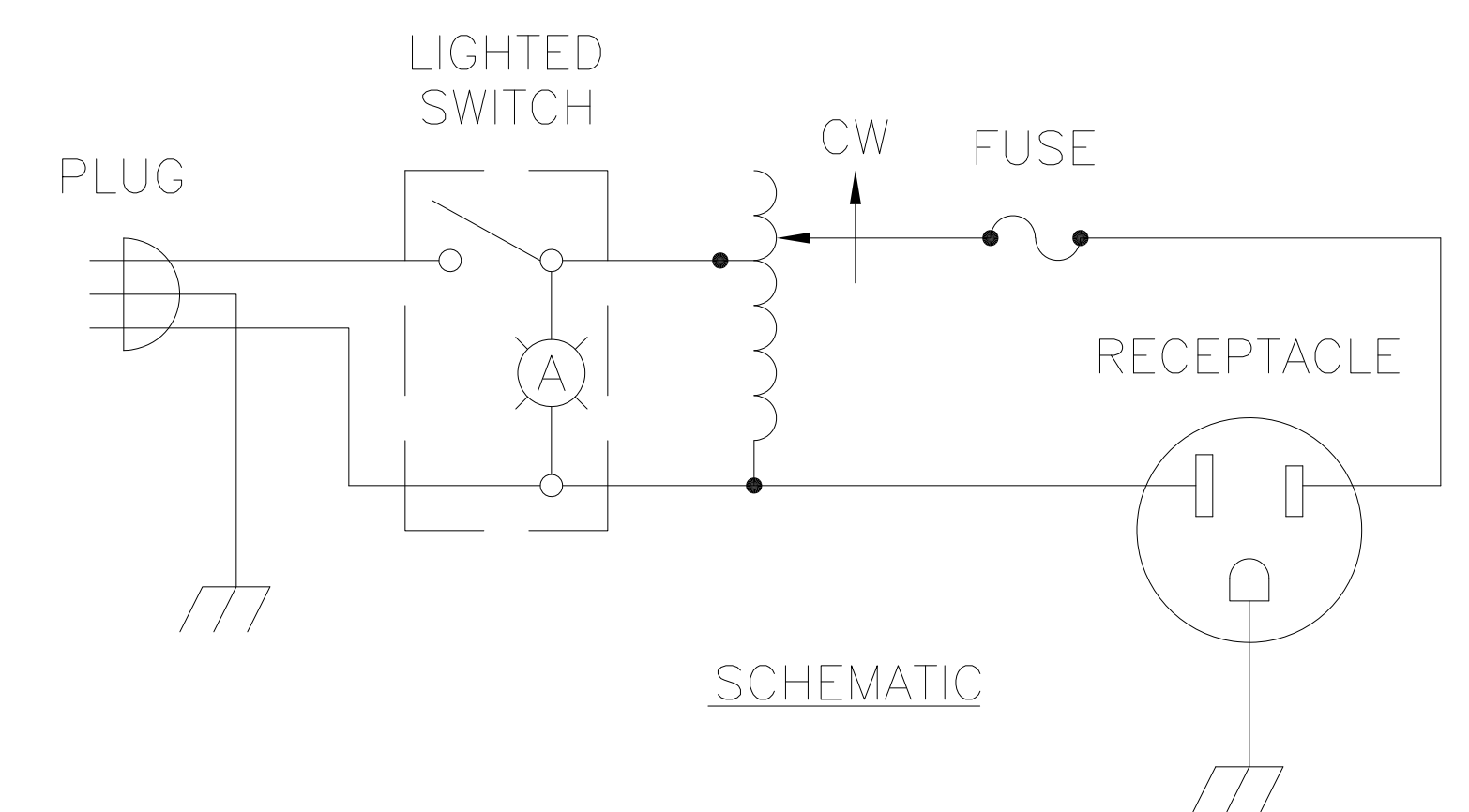
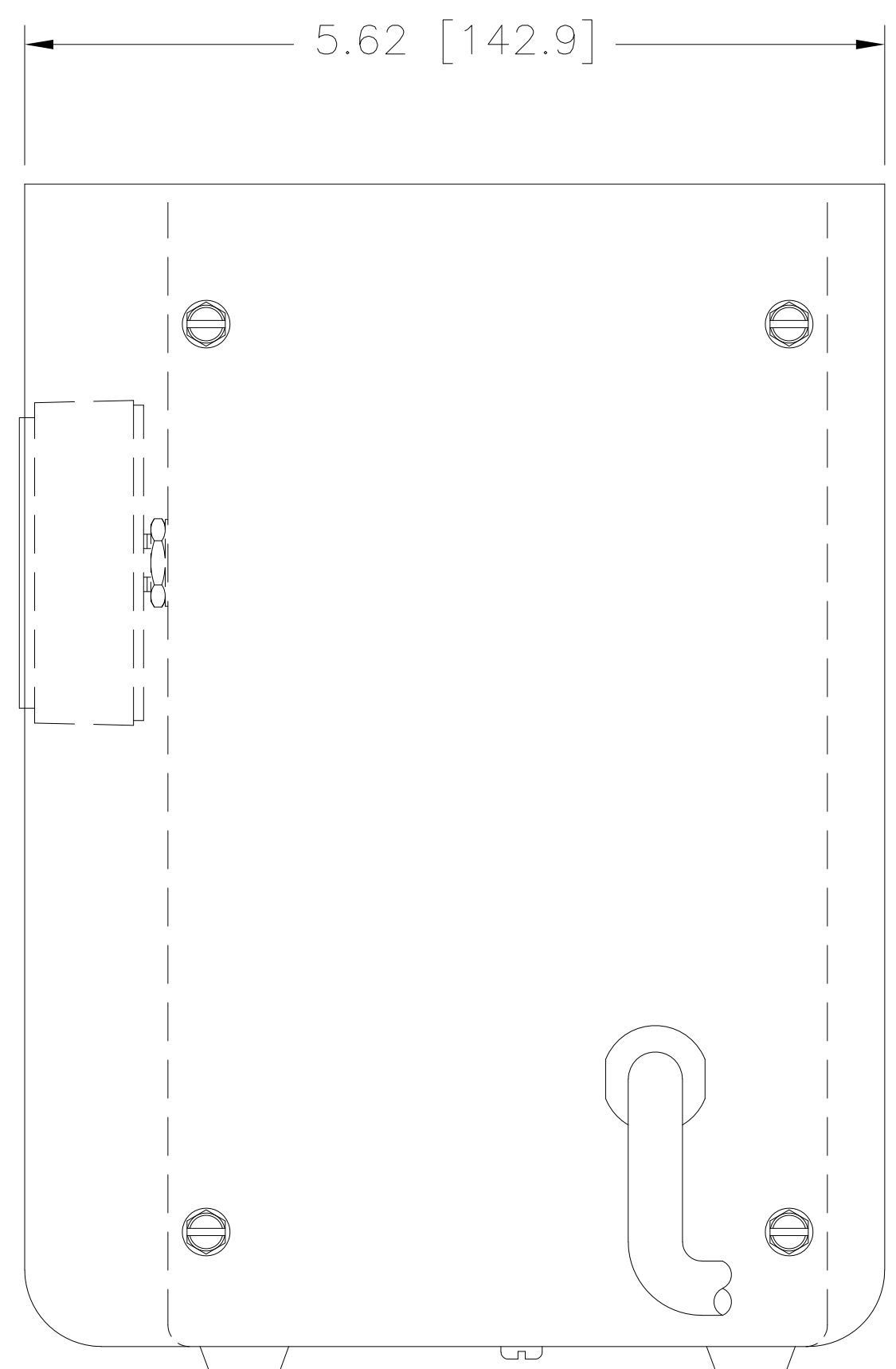
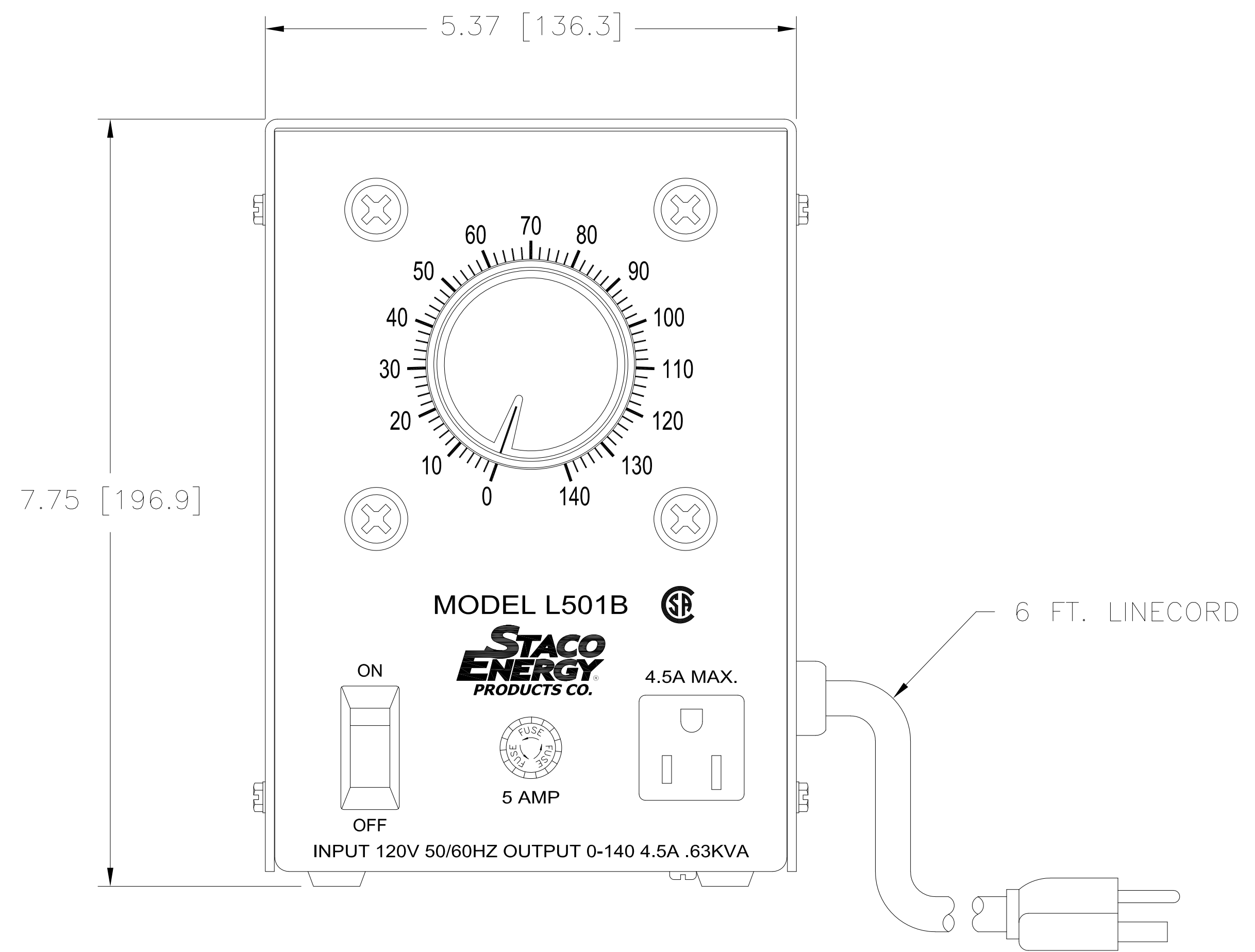
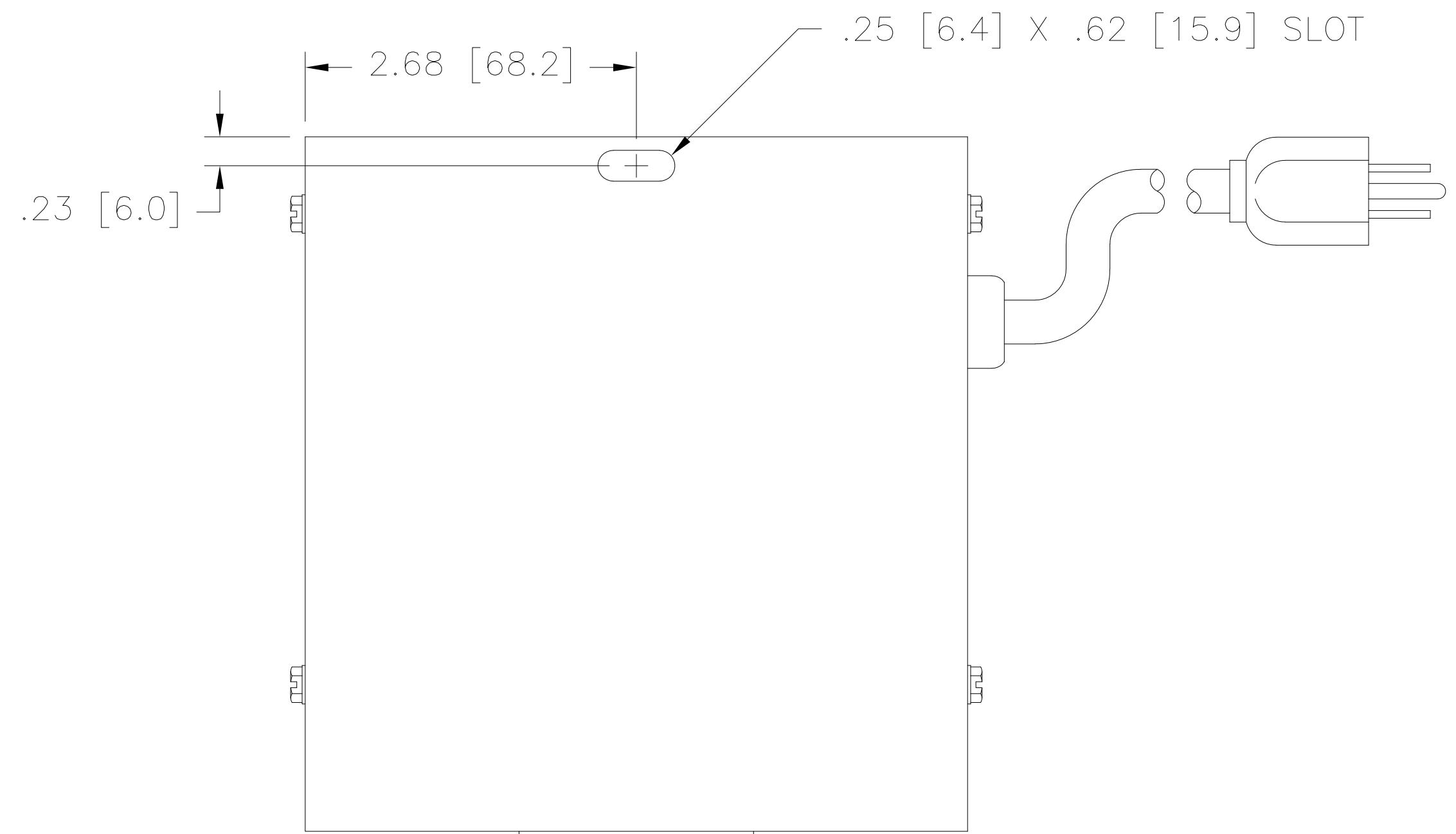


DWG. NO.	065-1029		
REVISIONS			
SYM.	E.C.G.	DATE	APVD.
A	24794	4/9/02	REVISED HARDWARE
B	25781	9/29/06	REVISED SILKSCREEN
C	28805	4/5/17	UPDATED LOGO



SPECIFICATIONS					
WIRING	INPUT		OUTPUT		
	VOLTS	HERTZ	VOLTS	CONSTANT CURRENT LOAD	
SINGLE PHASE	120	50/60	0-140	MAX. AMPS	MAX. KVA
				4.5	0.63

UNLESS OTHERWISE SPECIFIED, TOLERANCE IS ±		UNITS		TITLE: SPEC. CONTROL DRAWING	
DECIMALS	Holes	ANGLES	DRAFT	VARIABLE AC POWER SOURCE	
.XX	.010	1°	1-1/2°	MODEL: L501B	
.XXX	.005			DRAWN BY: S.A. SMITH	
MATERIAL:				DATE: 3/4/99	FIRST USED ON:
ALL DIMENSIONS APPLY AFTER PLATING.				CHECKER:	DO NOT SCALE DWG.
The information and design disclosed herein was originated by and is the property of STACO ENERGY PRODUCTS CO., which reserves all patent, proprietary, design, manufacturing, reproduction, use and sale rights thereto, and to any article disclosed therein except to the extent rights are expressly granted to others. The foregoing does not apply to vendor proprietary parts.				ENGINEER:	WEIGHT APPROX.
				SCALE: 1=1	CAGE CODE: 83008
				SHEET 1 OF 1	DWG. NO. 065-1029

