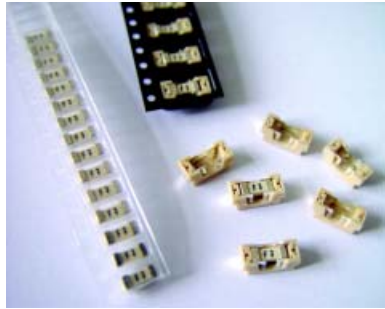


No. 425 / X-SMQ



UL 248-14, 125V, T Holder with mounted fuse No. 420

Time-Current Characteristic
Time Lag (T)

Standard
UL 248-14
CSA C22.2 No. 248.14

Approvals
cULus Recognized

Features

- Quicker and easier replacement of the fuse
- For line or low voltage applications
- Low voltage drop
- Internationally approved
- High pulse resistance
- For reflow soldering

WebLinks

Further info see:
www.wickmann.com

Further application info see Fuseology:
www.wickmann.com/download/fuseology.pdf

Specifications

Packaging
010: Blister tape 38 cm reel (1500pcs.)
tape width 16 mm

Materials of the Holder
Housing: Holder plastics UL94V0
Terminals: Copper alloy, Ni+Sn plated,
lead free

Operating Temperature
-55°C to +125°C (consider de-rating)

Climatic Category
-55°C/+125°C/21 days (IEC 60068-2-1...3)

Stock Conditions
+10°C to +60°C
relative humidity ≤ 75% yearly average,
without dew, maximum value for 30 days-95%

Vibration Resistance
24 cycles at 15 min. each (IEC 60068-2-6)
10 - 60Hz at 0.75mm amplitude
60 - 2000Hz at 10g acceleration

Solderability
235°C, 3 sec. (IEC 60068-2-58)

Soldering Heat Resistance
260°C, 10 sec. (IEC 60068-2-58)
280°C, 5 sec.

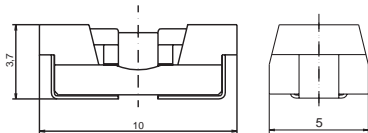
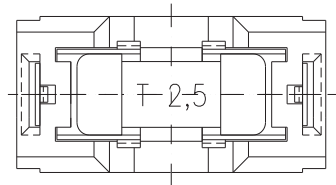
Minimum Cross Section, Copper
Conducting path - 0.1mm²
Thickness - 0.035mm

Mounting
Avoid circuit traces below the fuse

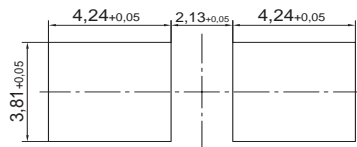
Marking on fuse
T, Current Rating

Unit Weight
0.4g (approx.)

Dimensions (mm)



Pad Layout



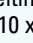


Limits for Pre-arcing Time

Rated Current	2.0 x I _N
500mA ... 5.00A	1s ... 60s



Permissible continuous operating current is ≤ 70% at ambient temperature of 23°C (73.4°F).

Rated Current	Amp code	Voltage Rating	Breaking Capacity	Voltage Drop 1.0 x I _N  typ. (mV)	Power Dissipation 1.0 x I _N  typ. (mW)	Melting Integral 10 x I _N  min. (A ² s) typ.	Approvals cULus
500mA	0500	125V	50A / 125VAC 50-60Hz cos φ = 1.0 50A / 80VDC	430	230	0.22 0.29	p
750mA	0750	125V		300	270	0.75 1.0	p
1.00A	1100	125V		270	435	1.60 2.2	p
1.50A	1150	125V		150	270	3.20 5.0	p
2.00A	1200	125V		165	380	5.50 6.8	p
2.50A	1250	125V	130	400	8.50 11.0	p	
3.00A	1300	125V	125	450	11.0 14.5	p	
3.50A	1350	125V	35A / 125VAC 50-60Hz; cos φ = 1.0 50A / 80VDC	112	512	21.0 28.0	p
4.00A	1400	125V		110	560	30.0 40.0	p
5.00A	1500	125V		100	620	50.0 74.0	p

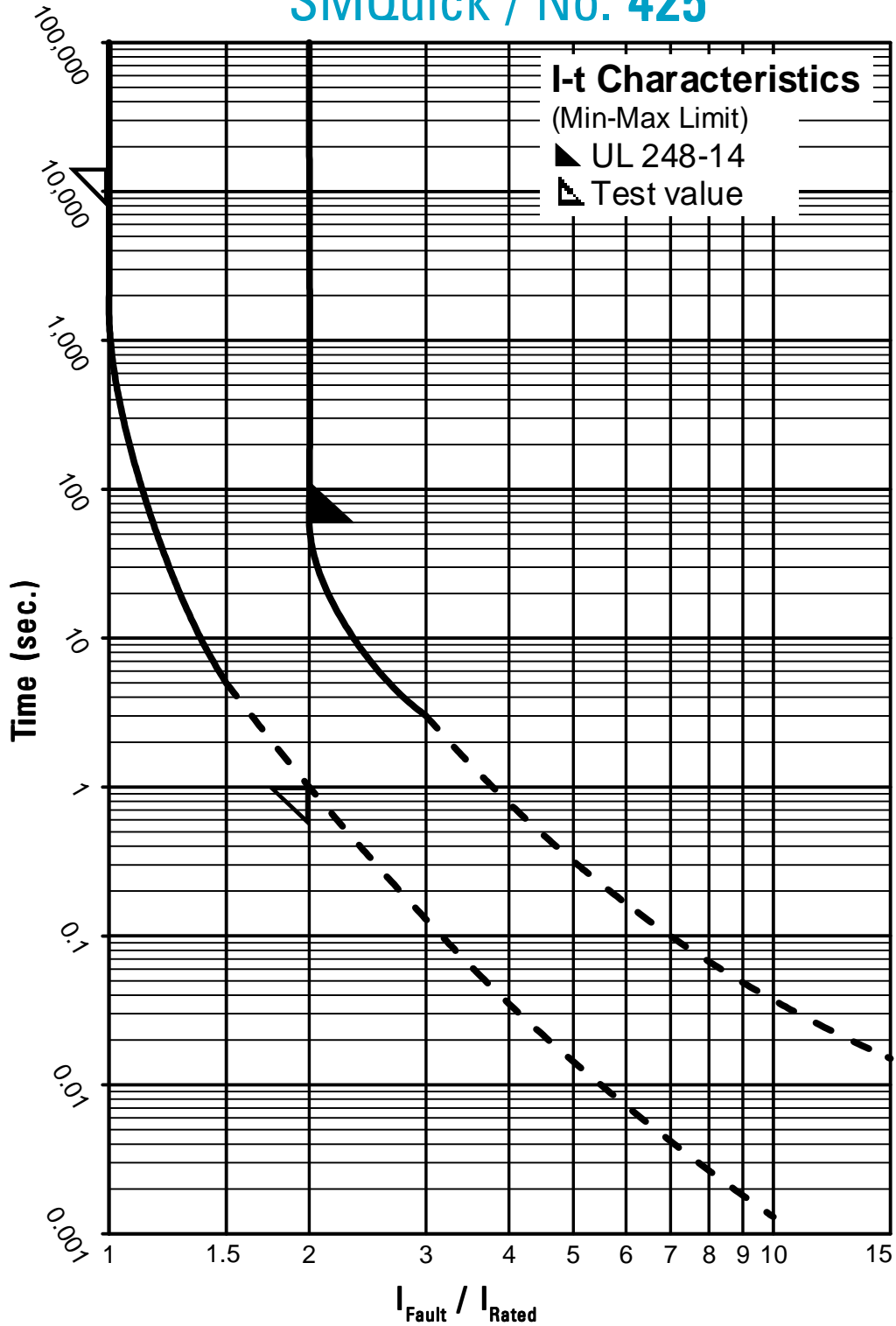
p=pending

Order Information

Qty.	Order-Number	Series	Amp Code	Packaging
		425		

Specifications are subject to change without notice

SMQuick / No. 425



Contact WICKMANN for individual I-t curves