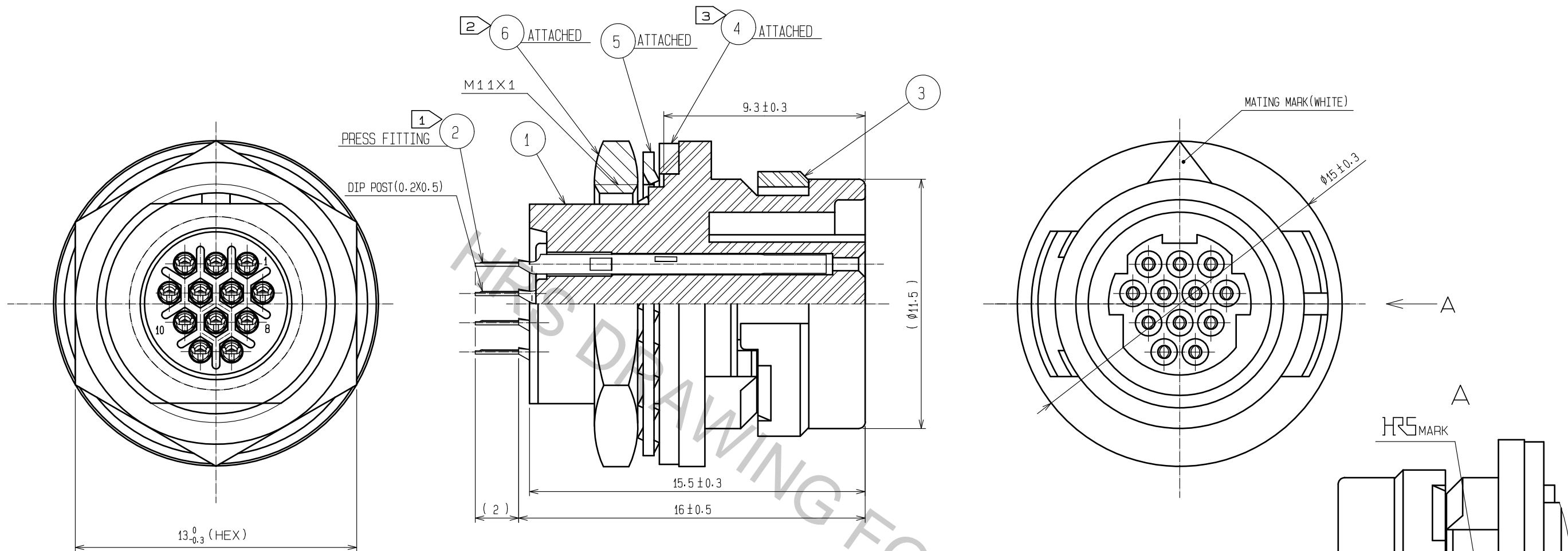


Aug.1.2018 Copyright 2018 HIROSE ELECTRIC CO., LTD. All Rights Reserved.
 In case that the application demands a high level of reliability, such as automotive,
 please contact a company representative for further information.



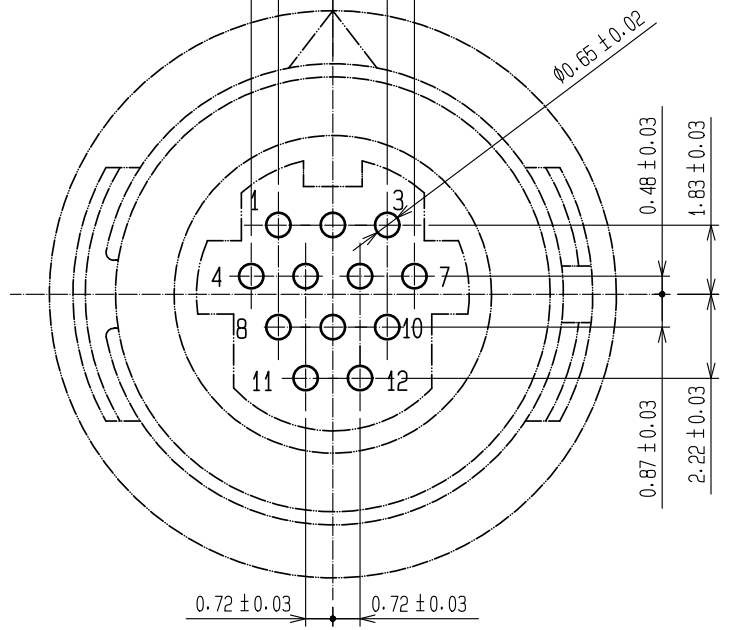
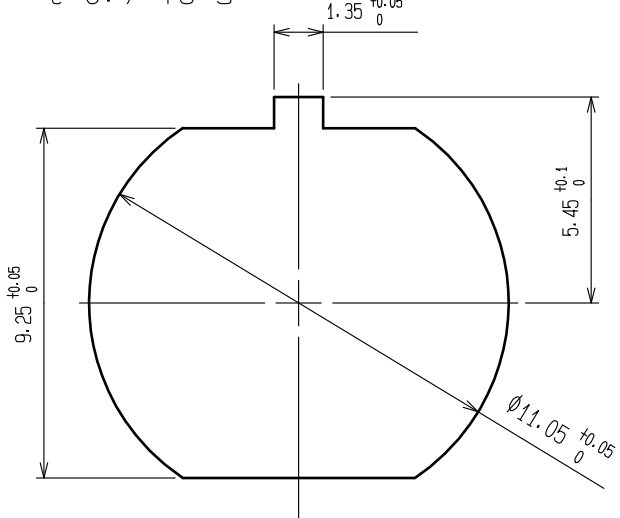
DIP POST LOCATION DIMENSIONS IN THE VIEW FROM CONNECTOR OPENING SIDE

(RECOMMENDED MAXIMUM PANEL THICKNESS : 1.2)



PANEL INSTALLATION HOLE

t=0.7 TO 3



- NOTES
- ① FINISH OF REF.NO. ②
 CONTACT AREA : GOLD 0.2μm min.
 DIP AREA : GOLD FLASH.
 UNDER PLATING: NICKEL 2μm min.
 - ② RECOMMENDED TIGHTENING TORQUE OF REF.NO. ⑥ : 0.8 N·m.
 LOOSENED NUT MAY CAUSE THE DETERIORATION OF WATER-RESISTANCY.
 THE USE OF LOOSENING-PREVENTIVE ADHESIVE IS STRONGLY RECOMMENDED.
 RECOMMENDED THREAD LOCKER : LOCTITE 263 , LOCKPRIMER 7649, HENKEL JAPAN LTD.
 - ③ AFTER REF.NO. ④ IS INSERTED TO REF.NO. ① ,
 REF.NO. ① IS MOUNTED ON THE PANEL.
 MAKE SURE THAT REF.NO. ④ DOES NOT HAVE ANY FACTORS TO REDUCE WATER-RESISTANCY,
 SUCH AS SCRATCH, TWIST, PINCHING, OR DUST.

3	POLYPHENYLENE SULFIDE (BLACK)	UL94V-0	6	BRASS	NICKEL PLATING
2	PHOSPHOR BRONZE	①	5	PHOSPHOR BRONZE	NICKEL PLATING
1	POLYPHENYLENE SULFIDE (BLACK)	UL94V-0	4	CHLOROPRENE RUBBER (BLACK)	
NO.	MATERIAL	FINISH . REMARKS	NO.	MATERIAL	FINISH . REMARKS
UNITS		SCALE	COUNT	DESCRIPTION OF REVISIONS	
mm		5 : 1	△	DESIGNED	CHECKED
APPROVED : HY. KOBAYASHI		18.02.26	DRAWING NO. EDC-113487-31-00		
CHECKED : HY. KOBAYASHI		18.02.26	PART NO. HR30-8R-12SD(31)		
DESIGNED : DS. MATSUNE		18.02.26	CODE NO. CL130-1019-4-31		
DRAWN : DS. MATSUNE		18.02.26	1/1		